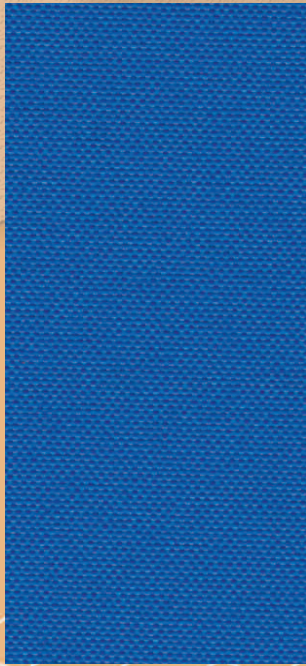
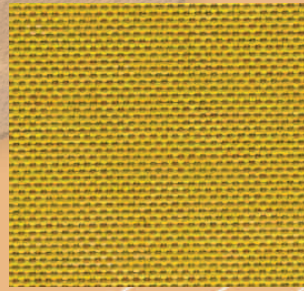


# VISTA™

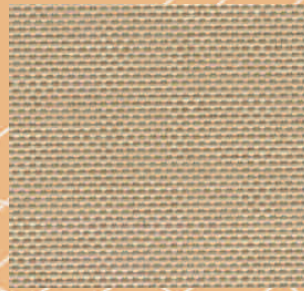
Solution Dyed Polyester



694 Caribbean Blue



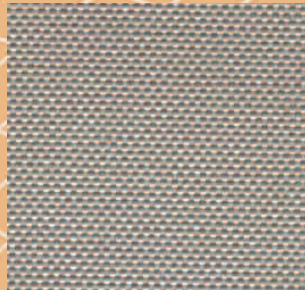
615 Cappuccino



642 Tan



633 Captain Navy \*



648 Sea Gull Gray



649 Black



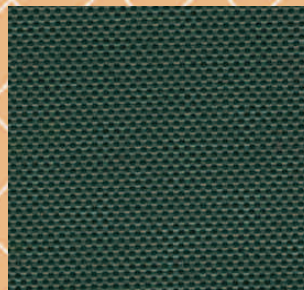
680 Pacific Blue \*



674 Navy Blue \*



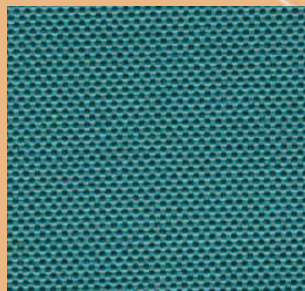
683 Red \*



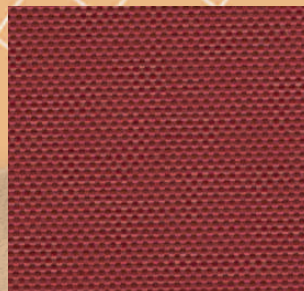
688 Dark Green



692 Charcoal



690 Teal



696 Burgundy \*

**MarChem CFI**

\* Premium Color, subject to change

# VISTA™

Vista is a 100% solution dyed polyester fabric (600 denier) with a clear back coat. It is characterized by excellent strength, durability, water resistance, tear resistance, abrasion resistance, dimensional stability, UV resistance and mildew resistance. Vista is an all purpose fabric that is made of solution dyed yarns. Because of this, you get exceptional color fastness along with no color rub off. Vista is truly an all purpose fabric that can be used for many outdoor applications such as marine tops and covers, Gazebo covers, playground equipment covers, canopies, tarps, BBQ grill covers, patio furniture covers and many other useful applications.

*Vista, the all purpose choice.*

## TECHNICAL DATA

Characteristics	TOP NOTCH™	TOP GUN™	MUSTANG™	ODYSSEY III™	VISTA™	SOFTOUCH™
Width, inches	60	62	62	64	60	60
Roll Size, yards	50	50	50	75	50	50
Weight, oz/sq. yard	11.5	11.5	9.0	6.5	7.5	11.5
Tensile (lb/in), Warp x Fill	500+ x 305	500+ x 388	360 x 250	297 x 220	320 x 255	348 x 222
Tongue Tear (lb/in), Warp x Fill	46 x 38	43 x 32	30 x 29	22 x 20	23 x 20	36 x 30
Spray Rating	100	90+	90+	90+	100	90+
3 Drop Rating (cm)	36	76	71	51	86	84
Warranty* Period	5	5	4	3	3	3
Breathability (g/m <sup>2</sup> /24 hr.)	645	116	100	87	107	90
Denier	840	600	450	300	600	n/a
Shrinkage (%), Warp x Fill	0 x 0	0 x < 1	0 x 0	0 x < 1	< 1 x 0	0 x 0
Stretch (%), Warp x Fill	0 x 0	0 x 0	0 x < 1	0 x < 1	< 1 x < 1	0 x 0

## MarChem CFI

500 Orchard Street New Haven, MO 63068  
 (800) 343-6326 (573) 237-4444 Fax (573) 237-4491  
[www.marchemcfi.com](http://www.marchemcfi.com)

\* Contact MarChem CFI for specific details of warranty coverage.